

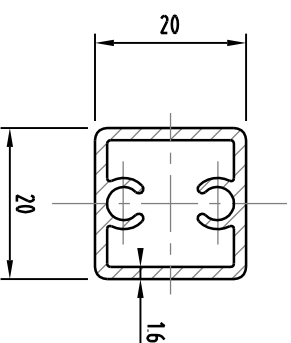
STANDARD MODULAR HANDRAIL (AXIOM AXELCS BALUSTRADE)

(SCALE 1:2)

POST SCHEDULE

HEIGHT	POST SPACING
1050 MAX.	1350 mm CRS. MAX.
1200 MAX.	1350 mm CRS. MAX.

NOTE : ALL ALUMINIUM TO BE 6060 T5 GRADE (U.N.O.) ALL SCREW FIXINGS TO BE STAINLESS STEEL



ALUMINIUM SLATS (SCALE 1:1)

DESIGN HORIZONTAL LIVE LOAD = 0.75 kN/m, DESIGN INFILL LIVE LOAD = 10 kPa.
 DESIGNED FOR C3 CLASSIFICATION IN ACCORDANCE WITH AS.1170.1
 APPLICABLE FOR WIND REGIONS A & B TO AS.1170.2, TERRAIN CATEGORY 2 IN ACCORDANCE WITH AS.1170.2 FOR BALUSTRADE UP TO 1200 mm MAX. HEIGHT
 REGION A MAXIMUM BUILDING HEIGHT 50 m
 REGION B MAXIMUM BUILDING HEIGHT 10 m

AXIOM GROUP	
P.O. BOX 94, WERRIBEE VIC. 3030	
PH. 1300 652 336	EMAIL. sales@axiomgroup.com.au
FAX. 1300 611 789	WEB. axiomgroup.com.au
DESIGNED	RC
DATE	MAY'13
DRAWN	AB
SCALE	1:2
REF No	ROLL No

CLIVE STEELE PARTNERS PTY LTD	
CONSULTING ENGINEERS - STRUCTURAL & CIVIL	
BUILDING 6	
62/195 WELLINGTON ROAD	
CLAYTON, VICTORIA	
AUSTRALIA.	
Telephone	(03) 9546 0223
Facsimile	(03) 9546 3022
Email	csp@clivesteele.com.au
AC/N	005 303 795
AB/N	92 627 427 761

REV	COMMENTS	DATE
B	ALUMINIUM GRADE NOTE AMENDED.	01-12-13
A	ALUMINIUM GRADE AMENDED FOR SLATS	30-09-13

STANDARD MODULAR HANDRAIL SYSTEM
 AXIOM AXELCS BALUSTRADE WITH ALUMINIUM SLATS. (POST SCHEDULE)

DWG. No. 17423 - S03

REV. B