

Company Name: \_\_\_\_\_

Date: \_\_\_\_\_

Contact Name: \_\_\_\_\_

Contact Number: \_\_\_\_\_

Job Number: \_\_\_\_\_

Colour name: \_\_\_\_\_

Colour code: \_\_\_\_\_



Please Tick

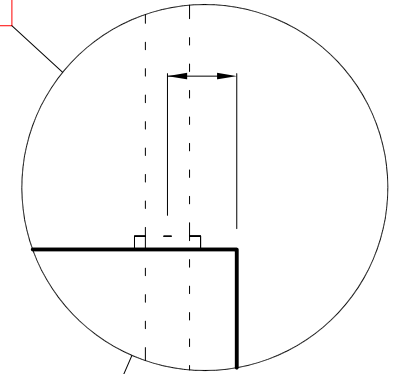
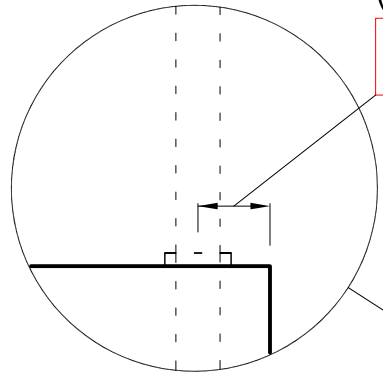
- Continues to straight run  
(Please indicate top or bottom)
- Staircase only  
(Sloped balustrade)

### 1x PANEL STAIR BALUSTRADE FORM (1)

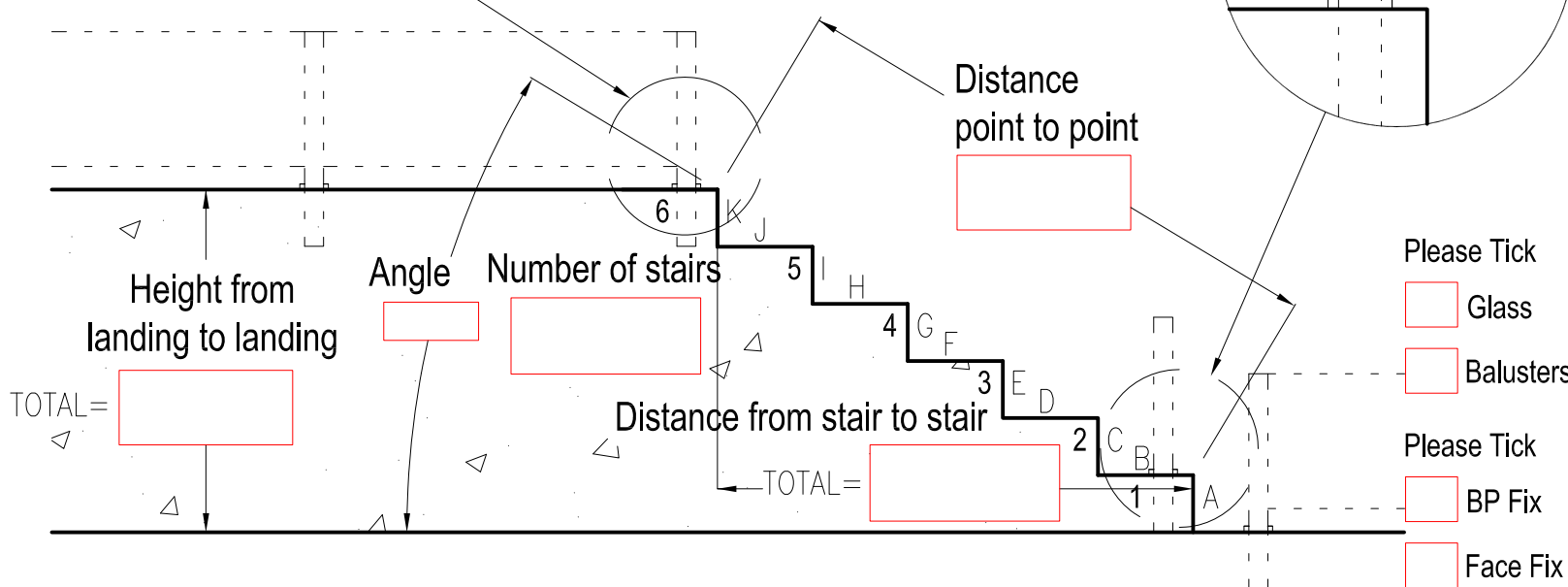
PLEASE NOTE: MAX PANEL WIDTH VARIES BETWEEN 1000mm & 1350mm  
DEPENDING ON HEIGHT & GLASS OR BALUSTER SELECTION

Post set back from top stair nose  
(min.75mm)

Post set back from bottom stair nose  
(min.75mm)



STEP WIDTH Dimension		STEP HEIGHT Dimension	
B		A	
D		C	
F		E	
H		G	
J		I	
TOTAL=		K	
TOTAL=		TOTAL=	



- Please Tick
- Glass
  - Balusters
- Please Tick
- BP Fix
  - Face Fix

Signed: \_\_\_\_\_

Please note: If all relevant fields are not filled out your order will not be processed and this form will be sent back for revision.

Company Name: \_\_\_\_\_

Date: \_\_\_\_\_

Contact Name: \_\_\_\_\_

Contact Number: \_\_\_\_\_

Job Number: \_\_\_\_\_

Colour name: \_\_\_\_\_

Colour code: \_\_\_\_\_



Post set back from top stair nose  
(min.75mm)

### 2x PANEL STAIR BALUSTRADE FORM (2)

PLEASE NOTE: MAX PANEL WIDTH VARIES BETWEEN 1000mm & 1350mm  
DEPENDING ON HEIGHT & GLASS OR BALUSTER SELECTION

Post set back from bottom stair nose  
(min.75mm)

Please Tick

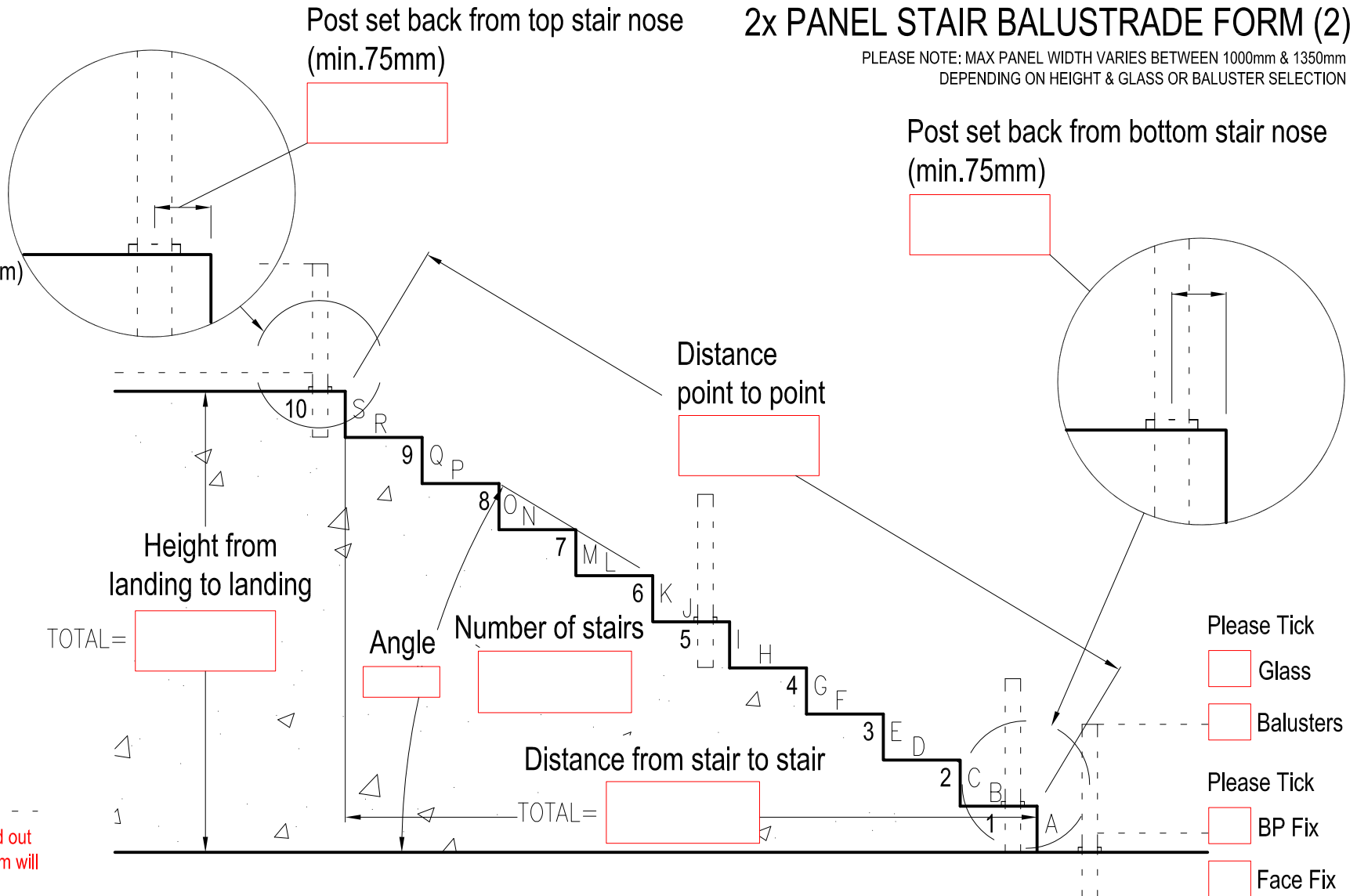
Continues to straight run  
(Please indicate top or bottom)

Staircase only  
(Sloped balustrade)

STEP WIDTH Dimension	STEP HEIGHT Dimension
B	A
D	C
F	E
H	G
J	I
L	K
N	M
P	O
R	Q
TOTAL=	S
	TOTAL=

Signed: \_\_\_\_\_

Please note: If all relevant fields are not filled out your order will not be processed and this form will be sent back for revision.



Please Tick

Glass

Balusters

Please Tick

BP Fix

Face Fix

Company Name: \_\_\_\_\_

Date: \_\_\_\_\_

Contact Name: \_\_\_\_\_

Contact Number: \_\_\_\_\_

Job Number: \_\_\_\_\_

Colour name: \_\_\_\_\_

Colour code: \_\_\_\_\_



### 3x PANEL STAIR BALUSTRADE FORM (3)

PLEASE NOTE: MAX PANEL WIDTH VARIES BETWEEN 1000mm & 1350mm  
DEPENDING ON HEIGHT & GLASS OR BALUSTER SELECTION

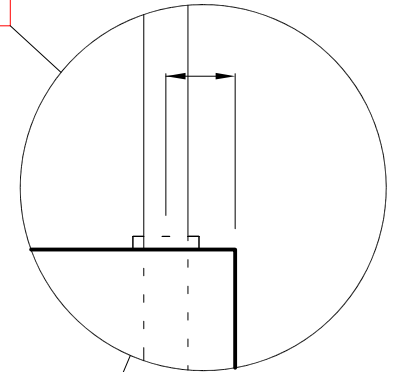
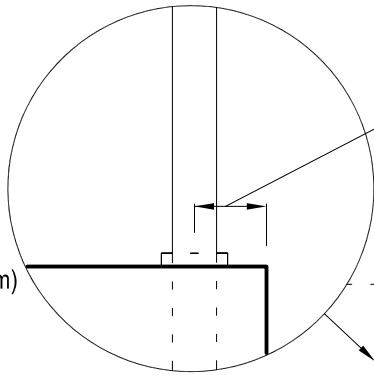
Post set back from top stair nose  
(min.75mm)

Post set back from bottom stair nose  
(min.75mm)

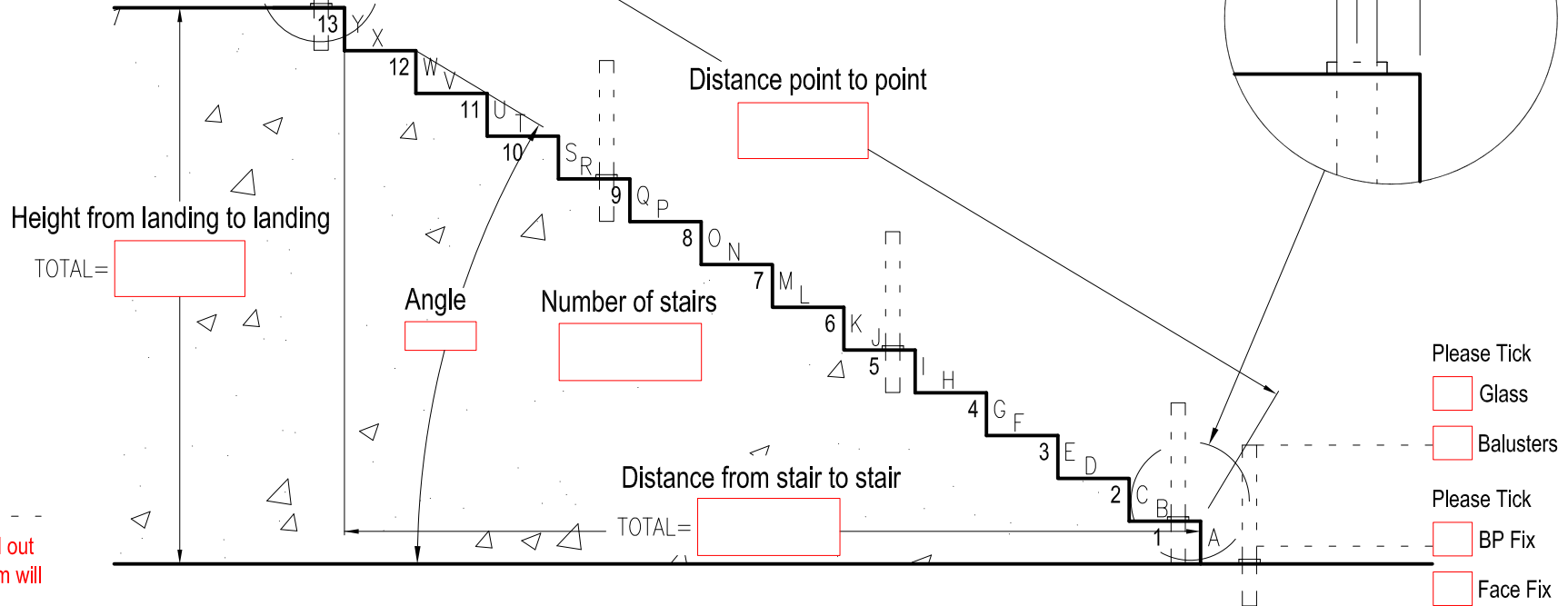
Please Tick

Continues to straight run  
(Please indicate top or bottom)

Staircase only  
(Sloped balustrade)



STEP WIDTH Dimension	STEP HEIGHT Dimension
B	A
D	C
F	E
H	G
J	I
L	K
N	M
P	O
R	Q
T	S
V	U
X	W
TOTAL=	Y
	TOTAL=



Signed: \_\_\_\_\_

Please note: If all relevant fields are not filled out your order will not be processed and this form will be sent back for revision.